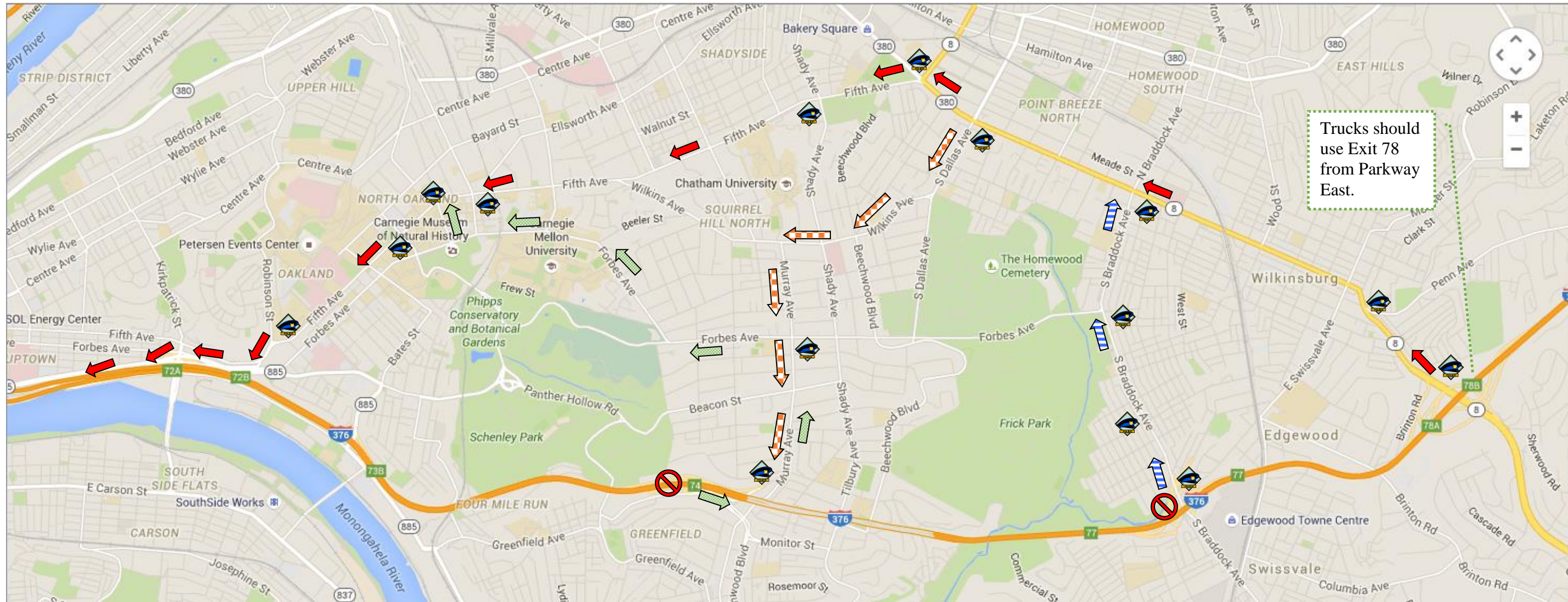





# Parkway East – Westbound Detour – November 4th at 10 PM till November 7th at 6 AM



<b>I-376 WB Detour</b> 
• Take Exit 78 B (Wilkinsburg/SR 8)
• Continue on Ardmore Blvd.
• Ardmore Blvd. becomes Penn Ave.
• Make Left onto Fifth Ave.
• Continue on Fifth Ave.
• Make Left onto Blvd of Allies
• Stay Right onto I-376 WB On Ramp
• End Detour

<b>I-376 WB Detour (From Edgewood On Ramp)</b> 
• Continue on S. Braddock Ave.
• Make Left onto Penn Ave.
• Continue on WB Detour

<b>I-376 WB Detour (From Squirrel Hill On Ramp)</b> 
• Continue on Beechwood Blvd.
• Make Left onto Forward Ave.
• Make slight Left onto Murray Ave.
• Make Left onto Forbes Ave.
• Make Right and continue on Forbes Ave.
• Make Right onto S. Bellefield Ave.
• Make Left onto Fifth Ave.
• Continue on WB Detour

<b>Off Duty Police Locations</b>	
1. Brinton Rd and Ardmore Blvd	9. Fifth Ave. and Shady Ave.
2. Penn Ave. and Ross St./Ardmore Blvd	10. Fifth Ave. and S. Craig St.
3. Penn Ave. and S. Braddock Ave.	11. Fifth Ave. and S. Bellefield Ave.
4. S. Braddock Ave. and Ramp H	12. Fifth Ave. and Bigelow Blvd.
5. S. Braddock Ave. and W. Hutchinson	13. Fifth Ave. and Craft Ave.
6. S. Braddock Ave. and Forbes Ave.	14. Murray Ave. and Forward Ave.
7. Penn Ave. and S. Dallas Ave.	15. Murray Ave. and Forbes Ave.
8. Penn Ave. and Fifth Ave.	

\*\*\*Squirrel Hill/Homestead Posted Detour  \*\*\*  
 From Primary Detour Penn Ave. take S. Dallas Ave. to Wilkins Ave. to Murray Ave.

\*\*\*Regional Posted Detour (NOT SHOWN)\*\*\*:  
 From PA TURNPIKE take Interchange 48 (SR 28). Exit onto SR 28 South. Continue on SR 28 South into Pittsburgh to access I376.