

# Pittsburgh **PARKING** Authority

*The Value Parking Network*

## GENERAL INFORMATION REGARDING THE NINTH & PENN GARAGE

**136 NINTH STREET, PITTSBURGH, PA 15222**

The Ninth Street & Penn Avenue Garage is a six-level structure opened in 1958.

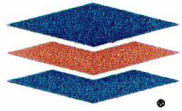
The Ninth Street & Penn Avenue Garage has 583 parking spaces and functions as a single threaded helix with two-way traffic.

The structural system consists of cast-in-place, conventionally reinforced two-way waffle slabs supported by cast-in-place, conventionally reinforced columns.

The Ninth Street & Penn Avenue Garage is accessible from Penn Avenue and Ninth Street both to enter and exit the garage.

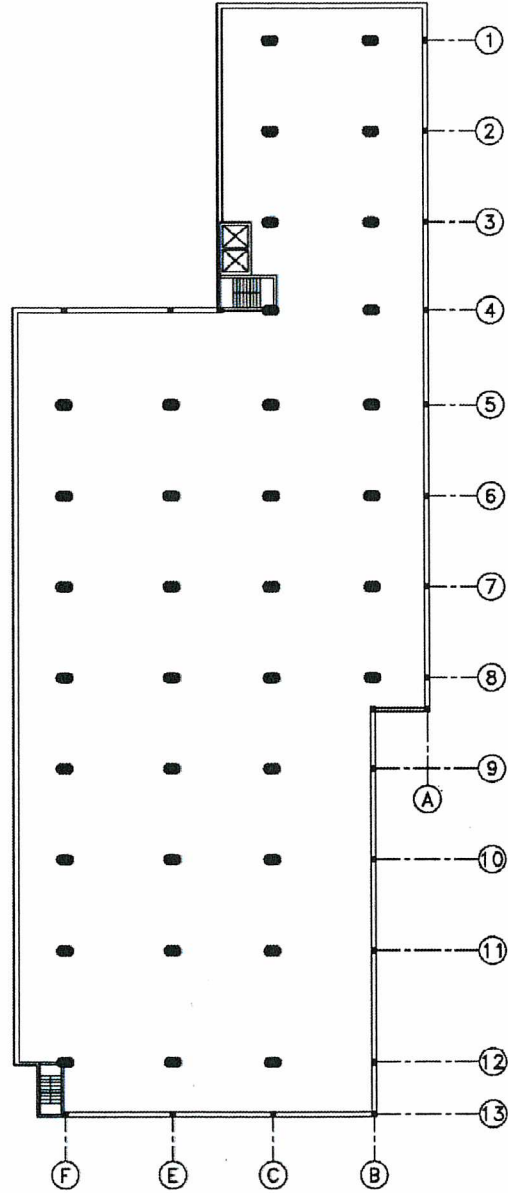
Total Area of garage:	195,984 sf.
Typical Floor area:	33,204 sf.
Maximum Dimensions:	330' x 125'
Typical Bay Dimensions:	59'-6" x 59'-8"
Architectural Shape:	Irregular
Year Opened:	1958
Number of Levels:	5 structurally supported + 1 slab-on-grade
Total Number of Spaces in garage:	583
Parking on Grade:	Yes
Retail Space within garage:	Yes
Below Grade parking:	Yes
Construction Type:	Cast-in-place, conventionally reinforced two-way waffle slabs and columns
Garage Functionality:	Two-way single helix
<b>Maximum Clearance Height:</b>	<b>6'7"</b>

SEE NEXT PAGE: NINTH & PENN GARAGE TYPICAL FLOOR PLAN



# Pittsburgh **PARKING** Authority

*The Value Parking Network*



NINTH AND PENN PARKING GARAGE  
TYPICAL FLOOR PLAN

