

Frick Environmental Center

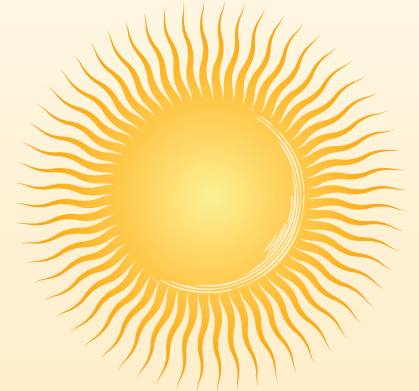
EARTH DAY 2013



CITY OF
PITTSBURGH
"AMERICA'S MOST LIVABLE CITY"
LUKE RAVENSTAHL, MAYOR

**Frick
Environmental
Center**
2005 Beechwood Blvd.
Squirrel Hill
412-422-6538

event schedule and details at
www.Citiparks.net



**Frick
Environmental
Center**

We strive to make all City programs accessible to everyone regardless of ability. If you need an accommodation for a disability, please contact Patty Himes at 412-422-6538 five working days prior to the event. Every effort will be made to accommodate you.

Luke Ravenstahl, Mayor

**Corey O'Connor, Chairperson
Committee on Urban Recreation**

Friday, April 19
Community Campfire
6 - 9 p.m.

Frick Environmental Center
Hang out at the campfire - FEC will provide the fire and sticks;
you provide the marshmallows and a cup for hot cider!

Saturday, April 20
Tree Planting Day
9 a.m. - 1 p.m.


Parking lot in Lower Frick
Volunteer for a morning of hands-on tree planting and then stay for lunch.
Pre-registration is required: pittsburghparks.org/volunteerdays.

Sunday, April 21
Nature Walks

Noon - 3 p.m. (walks every hour)
Frick Environmental Center

Enjoy an afternoon of nature walks throughout the 151-acre reserve.
(Please note: In the event of severe weather on April 21,
nature walks will be cancelled.)



 pittsburghpa.gov

 facebook.com/cityof.pittsburgh

 twitter.com/citypgh

The City does not discriminate against anyone on the basis of race, color, religion, ancestry, national origin, place of birth, sex, sexual orientation, familial status, age (40 and over), or non-disqualifying physical or mental disability, or on any other basis protected by federal, state or local law.

Citiparks
City of Pittsburgh • Dept. of Parks and Recreation

Earth Day 2013 Walk Schedule

Sunday, April 21

**Walks begin on the hour at 12:00, 1:00, 2:00 & 3:00; Day-of sign-ups required – Space is Limited*

12:00

- Spider Walk
- Lichen/Moss Walk
- Critters in the Litter
- Spring Wildflower Walk
- Tree I.D. Walk
- Spontaneous Acts of Beauty
- Mushroom Foray
- Talking Leaves: Five Senses & Poetry Walk
- Stream Hike
- Animal Signs in the Woods

2:00

- Spider Walk
- Lichen/Moss Walk
- Critters in the Litter
- Bird Walk
- Spontaneous Acts of Beauty
- Mushroom Foray
- Talking Leaves: Five Senses & Poetry Walk
- Stream Hike
- Wild Edibles Walk
- Urban EcoSteward Invasive Species Walk

1:00

- Spider Walk
- Lichen/Moss Walk
- Critters in the Litter
- Spring Wildflower Walk
- Fire Building
- Bird Walk
- The Buzz about Bees
- Animal Signs in the Woods
- Urban EcoSteward Invasive Species Walk
- Explore Designs for the New Environmental Center

3:00

- Spider Walk
- Lichen/Moss Walk
- Critters in the Litter
- Tree I.D. Walk
- Talking Leaves: Five Senses & Poetry Walk
- Wild Edibles Walk
- The Buzz About Bees
- Urban EcoSteward Invasive Species Walk
- Explore Designs for the New Environmental Center

Walk Descriptions

**Spider Walk* – Search for common spider families and their amazing webs.

^Lichen & Moss Walk – Learn about the tiny plants that inhabit Frick Park, where they live and why.

**Critters in the Litter* – Chase land snails and other critters in the leaf litter.

**Spring Wildflower Walk* – Open your eyes to the subtleties of the first wildflowers of spring. Beginners welcome.

^Tree ID Walk – Learn how to identify the common tree species in Frick Park. Geared for ages 11 and up.

**Spontaneous Acts of Beauty* – Celebrate the beauty of the forest through expressions of gratitude and installations of natural objects.

**Mushroom Foray* – Collect and identify mushrooms with local experts. Bring a basket and a knife for collecting.

^Talking Leaves: 5 Senses & Poetry Walk – Participate in sensory awareness activities and write wonder-filled poetry.

**Stream Hike* – Explore the stream habitat and the creatures that call it home.

**Animal Signs in the Woods* – Explore the woods for signs of woodland creatures of all types.

**Fire Building* – Learn the proper technique to make a campfire in the outdoors.

^Bird Walk – Identify the birds of Frick Park by sight and by sound with local bird enthusiasts. Beginners welcome. Bring binoculars & a field guide. Geared for ages 11 and up.

^Urban EcoSteward Invasive Species Walk – Learn about UES volunteer efforts to control the spread of invasive species.

**Wild Edibles Walk* – Learn to identify wild plants for edible and medicinal uses, when and how to harvest, and take home some simple recipes.

**The Buzz About Bees* – Scout out honey bees and the early spring plants they pollinate

**Explore Designs for the new Environmental Center* – Walk around the Environmental Center campus for a guided overview of the building and site plans for the new Center.

* = Family Friendly

^ = Geared for Adults