

# Step by Step Instructions

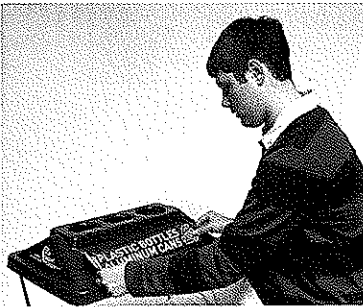
Make copies of these set up instructions to hand out to your crew!

Instructions also available in Spanish at [www.clearstreamrecycler.com/knowledgebase.htm](http://www.clearstreamrecycler.com/knowledgebase.htm)

**5 minutes now will  
save hours later!**

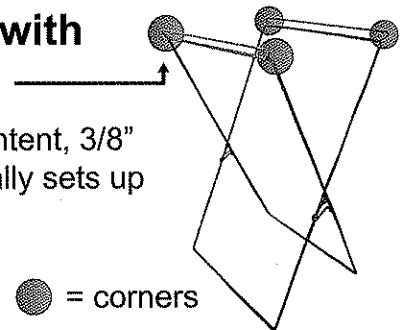
## 1 Apply 2 Decals In Advance

Use the "Bead Line" and window cleaner for a perfect job.

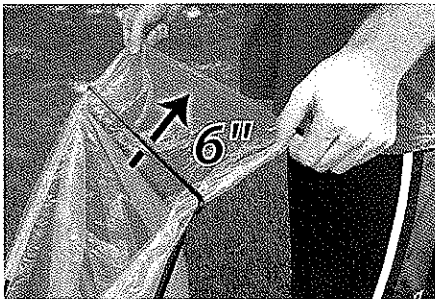


## 2 Open Frame with Loops on Top

The 80% recycled content, 3/8" thick steel frame literally sets up in seconds.

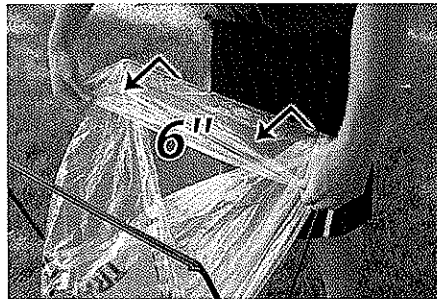


## 3 How to Lock the Bag to the Frame



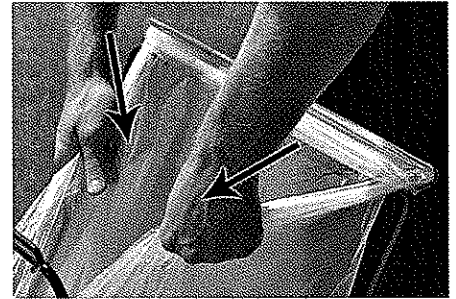
### PULL THROUGH

Work from inside to outside. Using two hands pull top edge of bag through the loop toward you approximately 6".



### PUSH OVER

Still using two hands, push the top edge of the bag over the loop approximately 6", catching the corners.



### TIGHTEN

Now, grasp both sides of the bag. Pull down and in to tighten bag around the corners. **Repeat on the other side.**

## 4 Snap the Lid to Frame

The lid has 4 hidden clips which snap it securely to the frame.



**You're Done!**

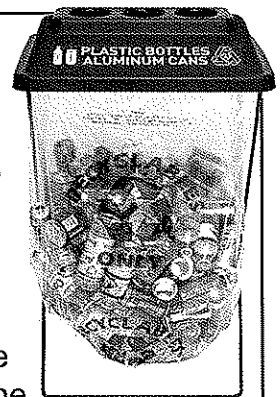
## Train Staff to Center Bag

Give everyone a turn to center the printing and lock a bag to the frame.



## Change Out Bags

When 2/3 full, release the bag lock and slide the full bag through the side of the frame. Knot the bag to secure contents.



Both English and Spanish video instructions are available on YouTube at [youtube.com/recyclingtips](http://youtube.com/recyclingtips), and in our in depth online knowledgebase at [www.clearstreamrecycler.com/knowledgebase.htm](http://www.clearstreamrecycler.com/knowledgebase.htm)

**SPONSOR THIS  
CONTAINER**

**YOUR NAME HERE**

[www.ResourcefulClearStream.com](http://www.ResourcefulClearStream.com)

## Billboards Create Sponsorships

The Billboard is a cost effective sponsorship addition to the ClearStream. It provides great visibility and helps to pay for your program. It allows you to showcase your sponsors, advertisers, and green organizations which helps ongoing recycling initiatives in your community.

Billboard kits include sign holders and sign kits. Sold separately.

## ClearStream Supplies

Sometimes a lid goes missing, or you need to order new decals to capture different recyclables. Our customer service specialists will quickly and efficiently handle your order requests for bags, lids, and decals, etc.

## Our Clear Bag is the Key to Success!

Our 40" x 46" 1.1 mil super hexene printed bag is designed specifically for the ClearStream application. The bags fit the units perfectly and most importantly, people see "clearly" what they are supposed to do. Keep an extra case on hand.

## For Indoor Use - Big Foot Base

Turn your ClearStream into a Permanent Indoor Container with a Big Foot Base

- Contains Spills
- Creates Permanent Stability
- Attractive Finished Appearance

Big Foot Base Sold Separately

## Transporters Save Backs & Budgets

The ClearStream Transporter is a heavy duty storage and transportation system. The Transporter holds 20 ClearStream frames, along with lids and bags. Locking wheels make it easy to trailer and store. It is easy to use and move with just one person.

Dimensions: 36 in x 23 in x 44. Weight: 75 lbs empty, 315 lbs full.



## ClearStream Hybrid

The ClearStream Hybrid is a cabinet which combines the functionality and economy of the ClearStream with the aesthetics of a permanent fixture. It is serviced by removing the lid.

- Transparent front panel and clear signage educate users. When placed next to a trash can, it is guaranteed to collect clean recyclables.
- Interchangeable locking ClearStream lids make it easy to target a variety of materials.

Dimensions: 41" x 17" x 25" Weight: 53 lbs.



## ClearMax - For Permanent Outdoor Use

ClearMax™ is perfect for parks, cityscapes, convention centers and public buildings... anywhere easy, visible and stationary recycling is needed.

- Features a slide out top drawer for easy servicing and bag changing, which eliminates heavy lifting.
- ClearMax ships assembled and ready to use (from the Midwest).

Dimensions: 40.75" x 23.25" x 19.25" Weight: 90 lbs.



## Custom & Stock Event Boxes

Event boxes are temporary containers for the collection of trash and litter. Order your ClearStream® Recyclers with Event Boxes printed "TRASH ONLY" or "COMPOSTABLES" today.

Minimum Order: 150 boxes Size: 18" x 18" x 34"



# Congratulations

You have purchased the only recycling container with a lifetime warranty on craftsmanship.

Please pass along these instructions to new crews working your events, including organizations that borrow your ClearStreams.

For other assistance and to place orders call customer service at 800-872-8241. You can also find these instructions on our web site at [www.clearstreamrecycler.com](http://www.clearstreamrecycler.com)

## IMPORTANT:

### SIDE-BY-SIDE PLACEMENT:

When setting up the ClearStreams, be sure each Recycler is placed directly next to (touching) a trash receptacle, like the TrashMax. On a windy day, put the ClearStream on the down wind side of the trash receptacle. See right for suggested "4-Pod" configuration.

**EXTRA BAGS:** Play it safe and overestimate how many bags you might need. You can always use them at your next event. Additional bags are available in cases of 100 bags.

**MONITORING:** Have staff pull bags when they are 2/3 full, tie off with a knot, and replace with a new bag.

**CLEAN UP:** Wipe off lids and frames as needed.

**STAGING:** For larger events, it is recommended that you set out the ClearStream containers the day before the event. However, put the bags on the frames the same day as the event to keep out trash, wind and rain.



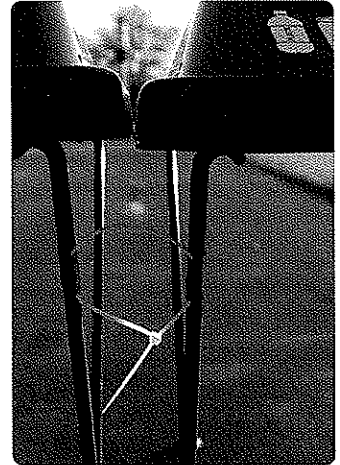
Made in the U.S.A



Copyright 2011 Resourceful Bag & Tag, Inc.

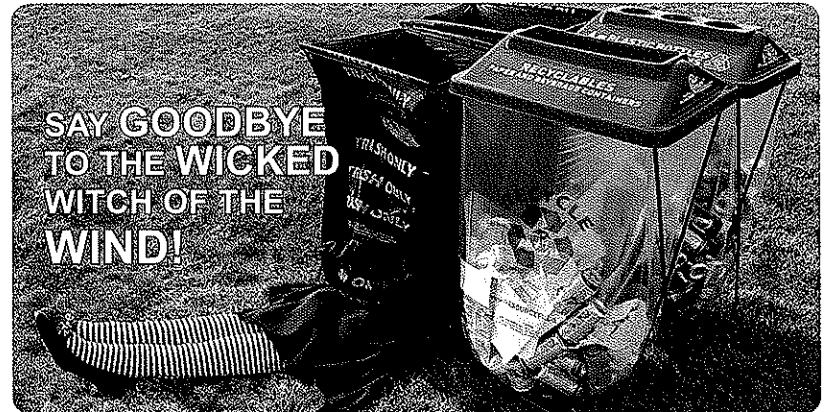
# The Ultimate Windbreak

When two or more ClearStreams are linked together into a pod, they can withstand the fiercest of wind conditions. Linked together, ClearStreams are more stable than any other temporary container.



The slots which are provided on all new ClearStreams allow you to thread 12 in. cable ties through the slots to bind the ClearStreams together. Once you do this, you can keep the cable ties in place, and store the ClearStreams in pairs.

Snap on clips are available to modify earlier ClearStreams for both linking together and providing a slot for the billboard frames.



To learn more about any of these steps or products, please visit our in depth knowledgebase at: [www.clearstreamrecycler.com/knowledgebase.htm](http://www.clearstreamrecycler.com/knowledgebase.htm)



Also, join our recycling community on Facebook at: [facebook.com/clearstreamrecycling](http://facebook.com/clearstreamrecycling)

## RESOURCEFUL CLEARSTREAM



Resourceful Bag & Tag, Inc.



Since 1990

800-872-8241 Fax 708-489-2260

[www.clearstreamrecycler.com](http://www.clearstreamrecycler.com) [sales@clearstreamrecycler.com](mailto:sales@clearstreamrecycler.com)

6420 W. 127th Street Suite 212 Palos Heights, IL 60463